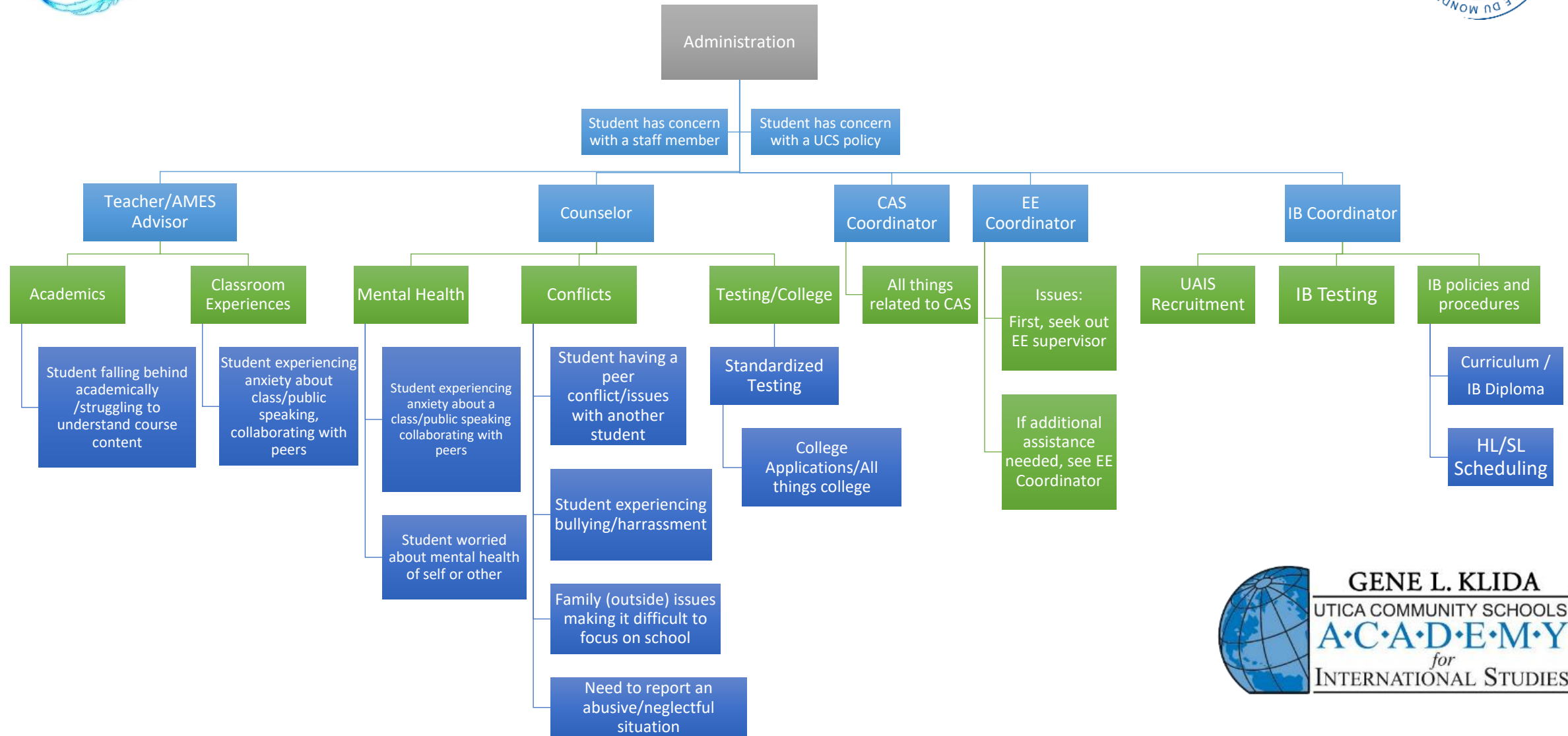




GLK-UAIS STUDENT & FAMILY SUPPORT MATRIX



Issues not resolved at the building level (e.g., Teacher/AMES Advisor, Counselor, Coordinator, or Building Administrator) will be referred by the building administrator to the appropriate central office for resolution. These central office departments include, but are not limited to, Pupil Services, Teaching and Learning, Special Education Services, and Human Resources.